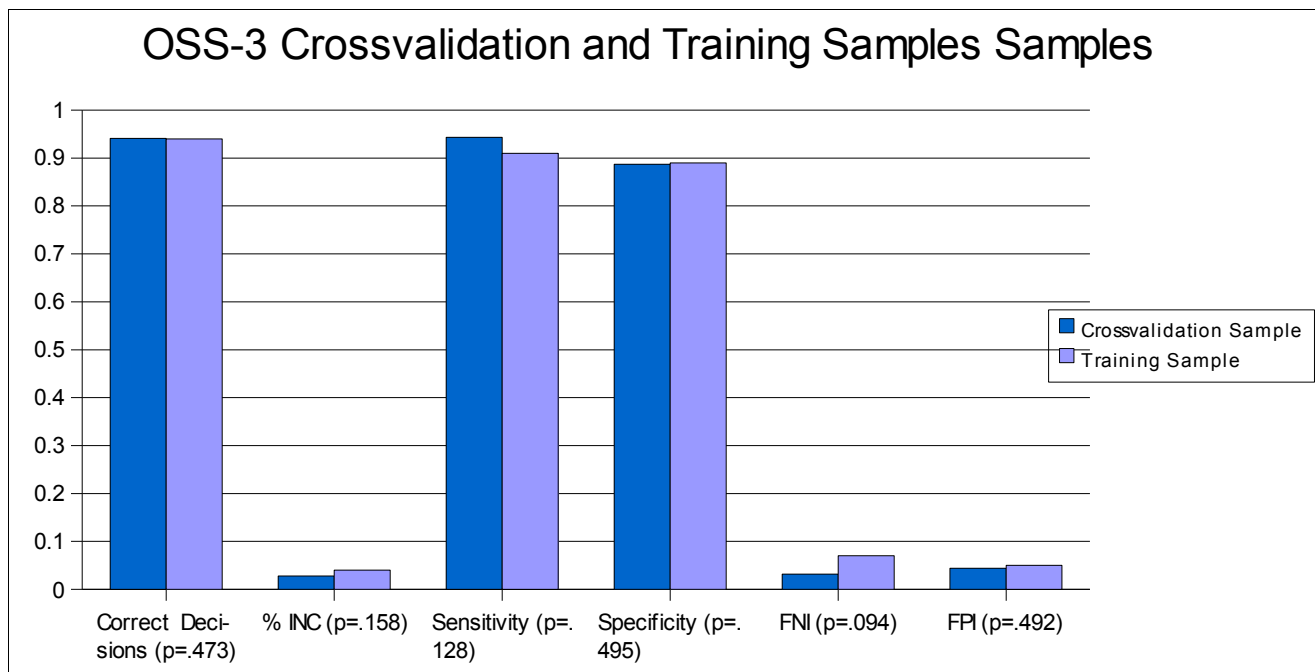


OSS-3 Crossvalidation and Training Samples

Double-bootstrap t-test of $M=292^2$ resample sets of $N=292$ confirmed ZCT cases from the training sample, and $M=70^2$ resample sets, with replacement, of $N=70$ confirmed mixed format cases from the crossvalidation sample.

Using Senter Rules	Crossvalidation Sample (N= 70)	Training Sample (N=292)	sig.
Correct Decisions	94.1%	93.9%	.473
INC	2.8%	4.4%	.158
Sensitivity	94.3%	90.7%	.128
Specificity	88.7%	88.8%	.495
FN	3.2%	6.6%	.094
FP	4.4%	4.5%	.492

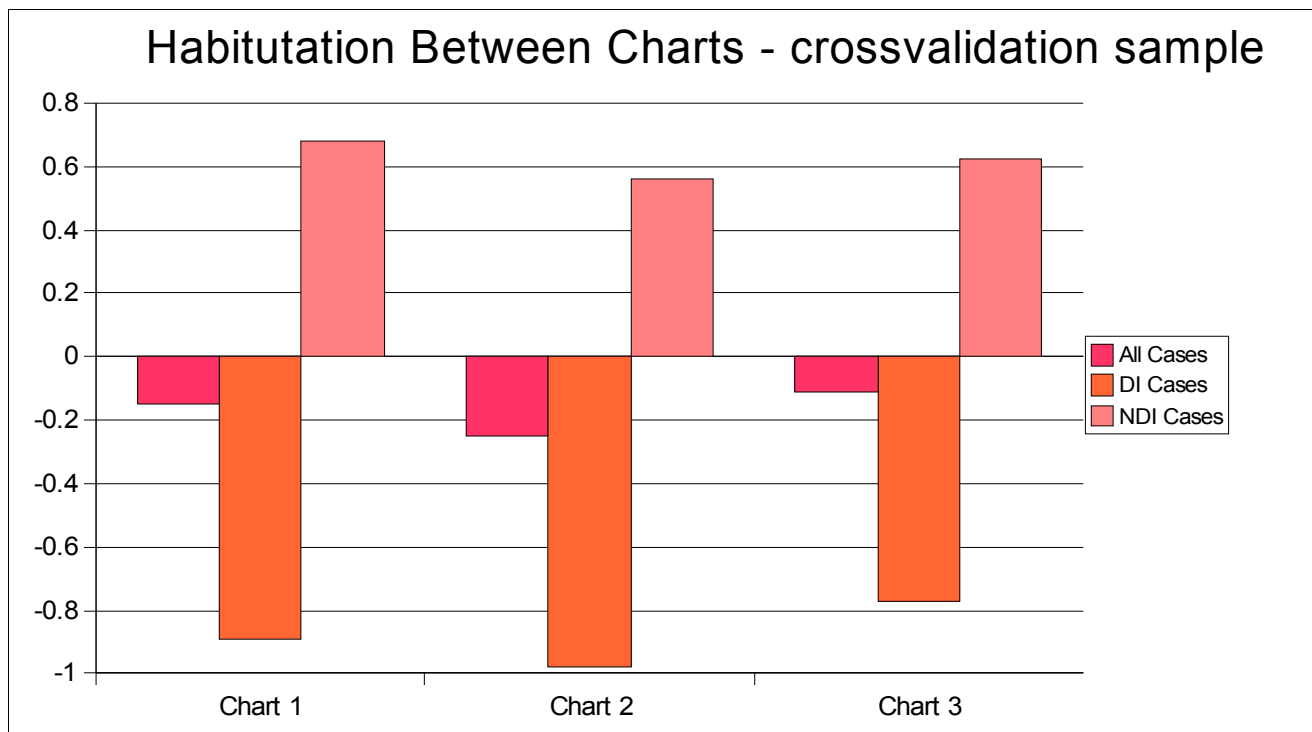


Habituation Between Charts – Crossvalidation Sample

Bootstrap ANOVA constructed from 1000 resampled sets, with replacement, of N=70 mixed format cases from the DoDPI confirmed confirmed case archive.

Average of
Weighted Means of
of Standardized
Lognormal
R/C Ratios

	Chart 1	Chart 2	Chart 3	F =	Sig.
All Cases	-0.151	-0.248	-0.113	0.003	.997
DI Cases	-0.892	-0.977	-0.772	0.011	.989
NDI Cases	0.678	0.559	0.621	0.004	.996



Habituation Between RQs – Crossvalidation Sample

Bootstrap ANOVA constructed from 1000 resampled sets, with replacement, of N=70 mixed format cases from the DoDPI confirmed confirmed case archive.

Weighted Mean of
of Standardized

Lognormal R/C Ratios

R 5

R 7

R 10

F =

Sig.

All Cases

-0.449

-0.226

0.134

0.053

.948

DI Cases

-1.137

-1.103

-0.522

0.129

.879

NDI Cases

0.271

0.663

0.844

0.096

.908

